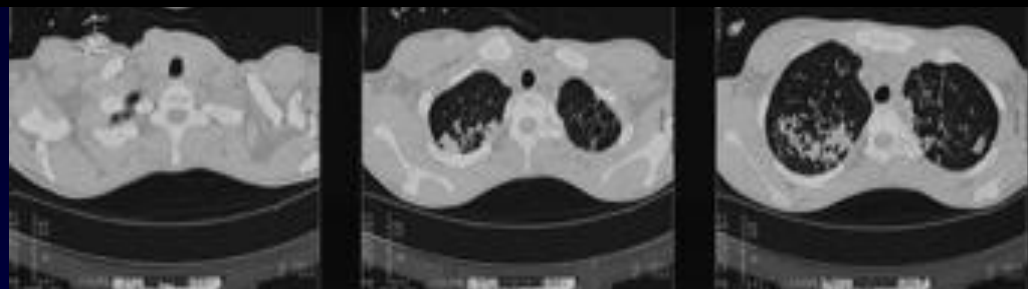




L. METGE

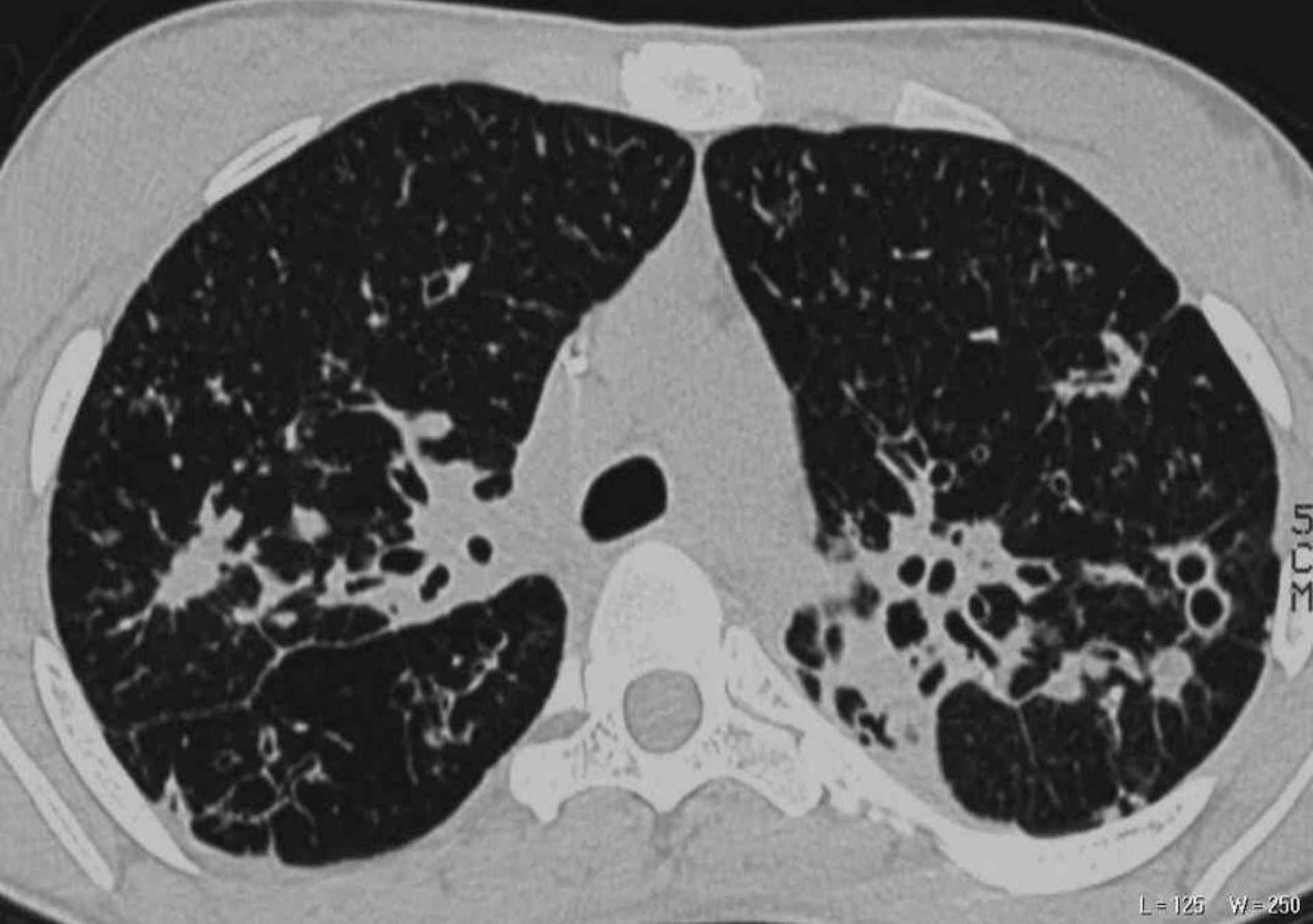
Isabelle et Nathalie, jumelles de 18 ans

Mucoviscidose connue





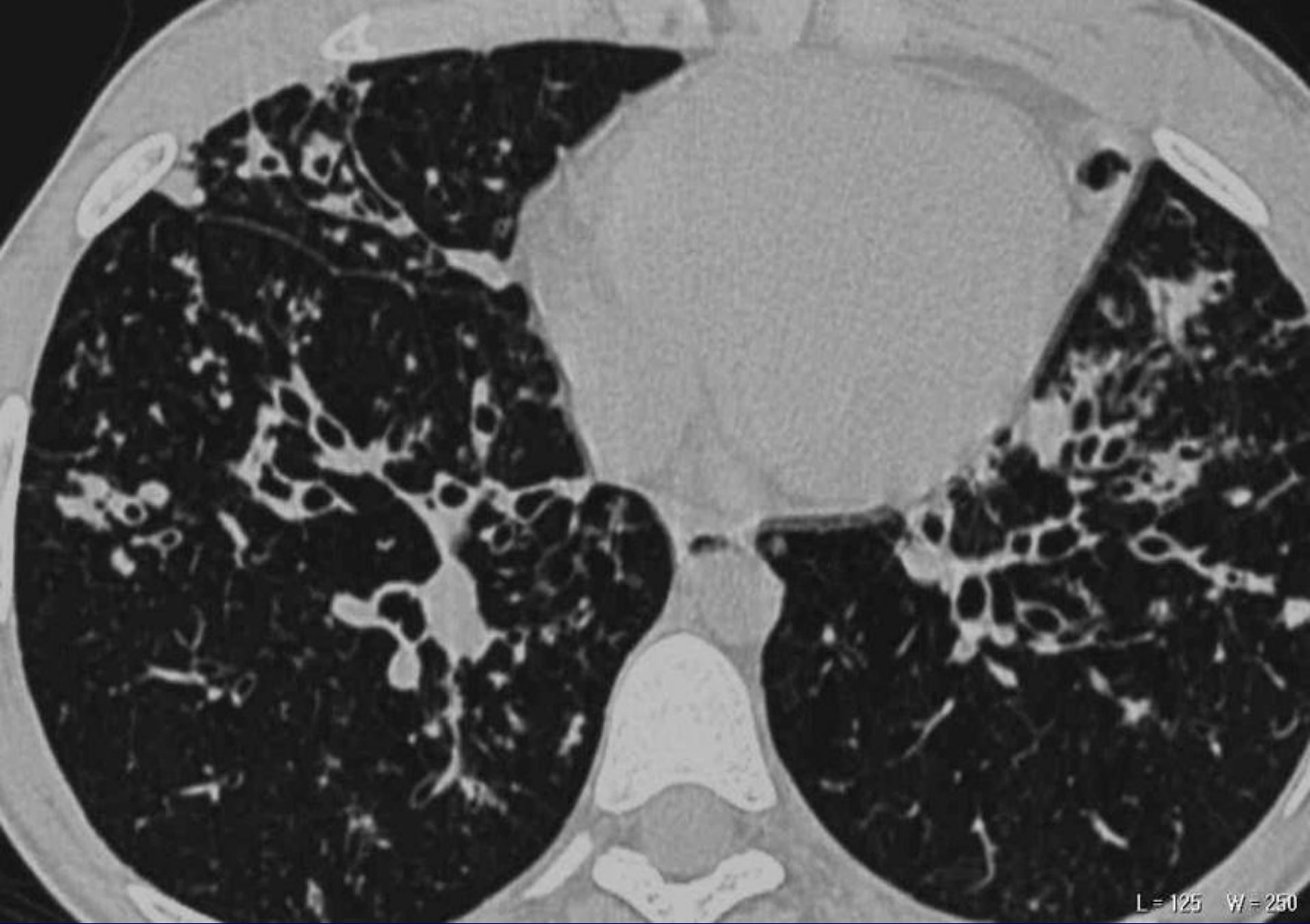
L = 125 W = 250



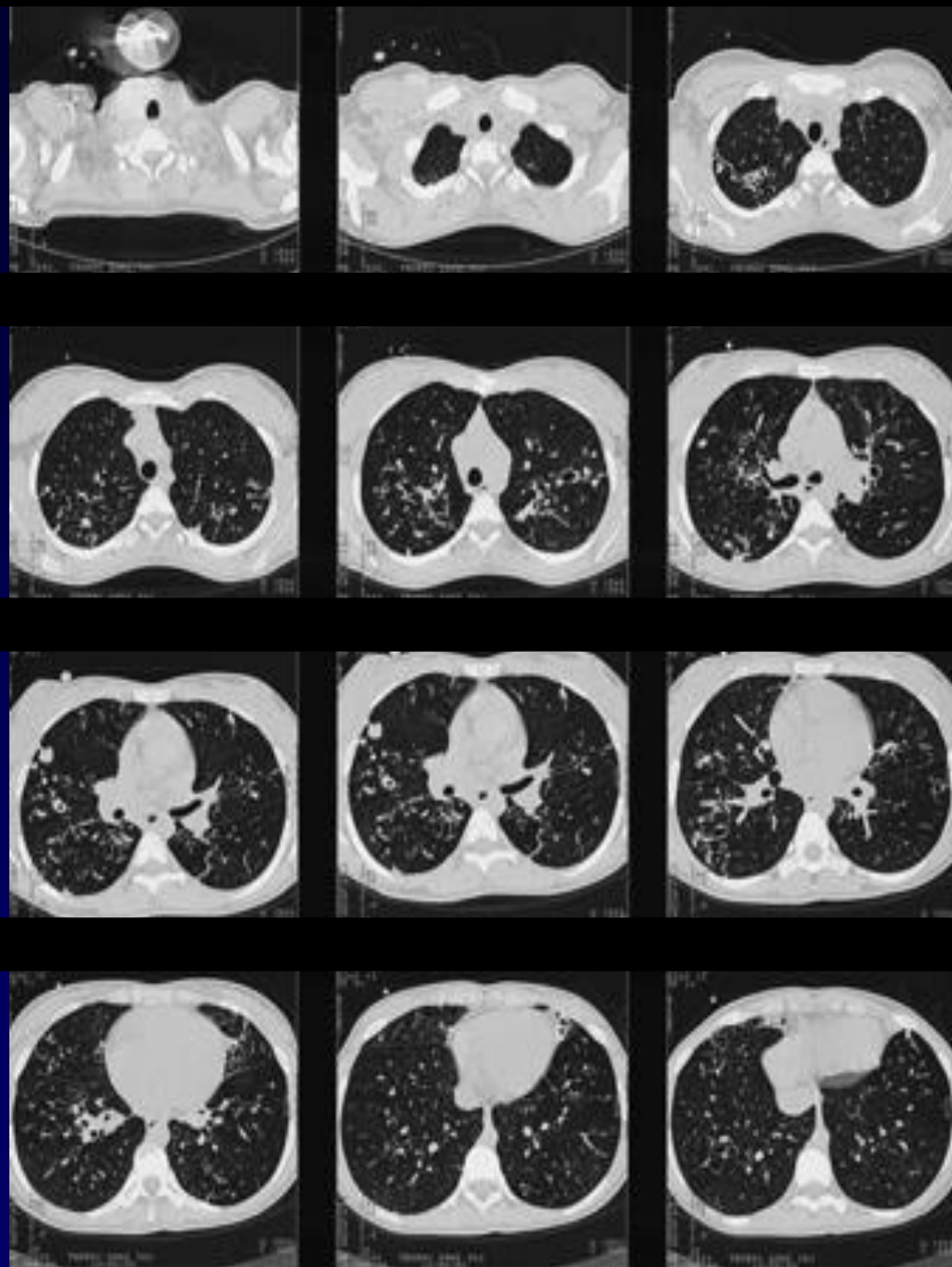
L = 125 W = 250



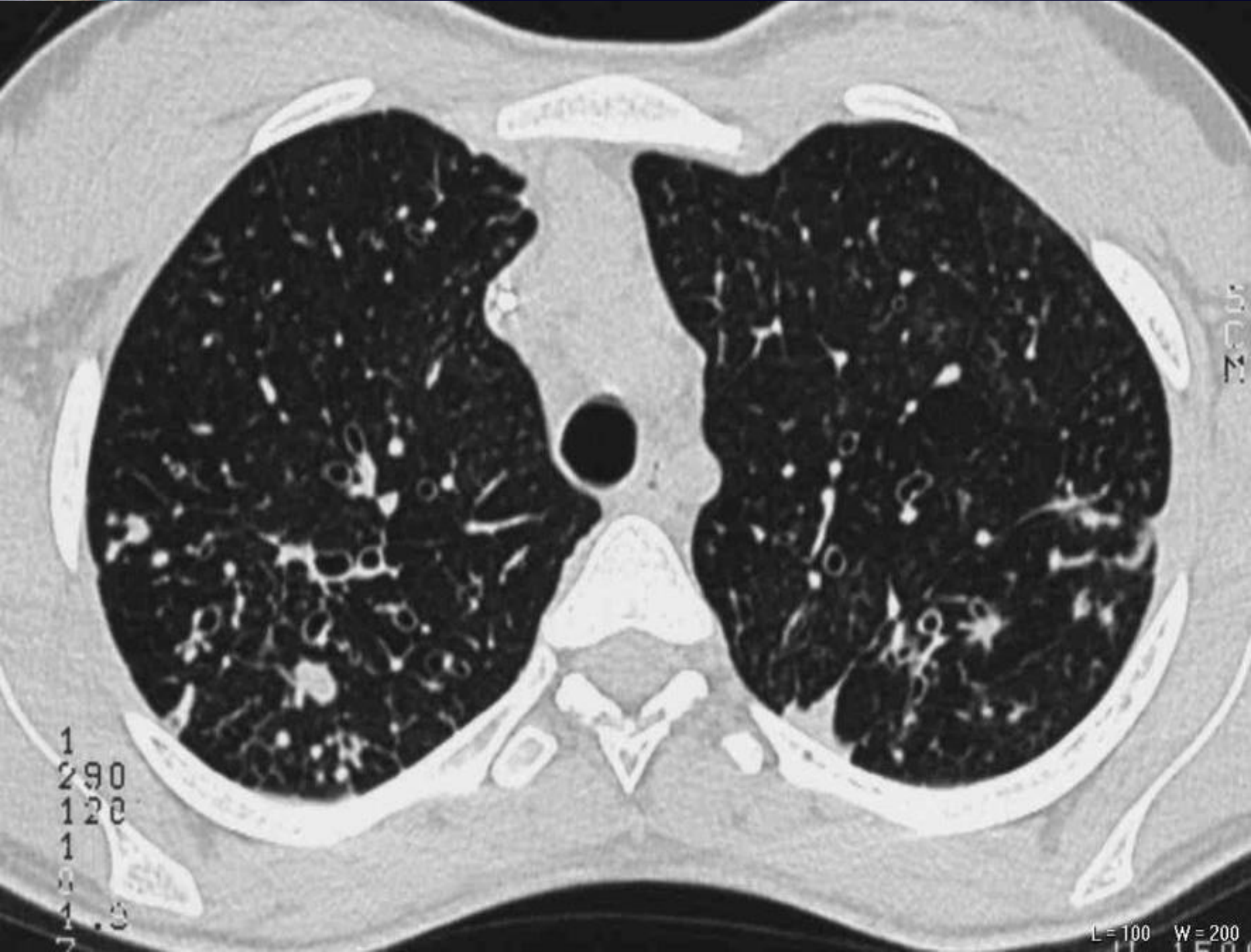
L = 125 W = 250



L = 125 W = 250



Doença miliar - Imagem 4203 - 32mm



1
290
120
1
0.5
1.5

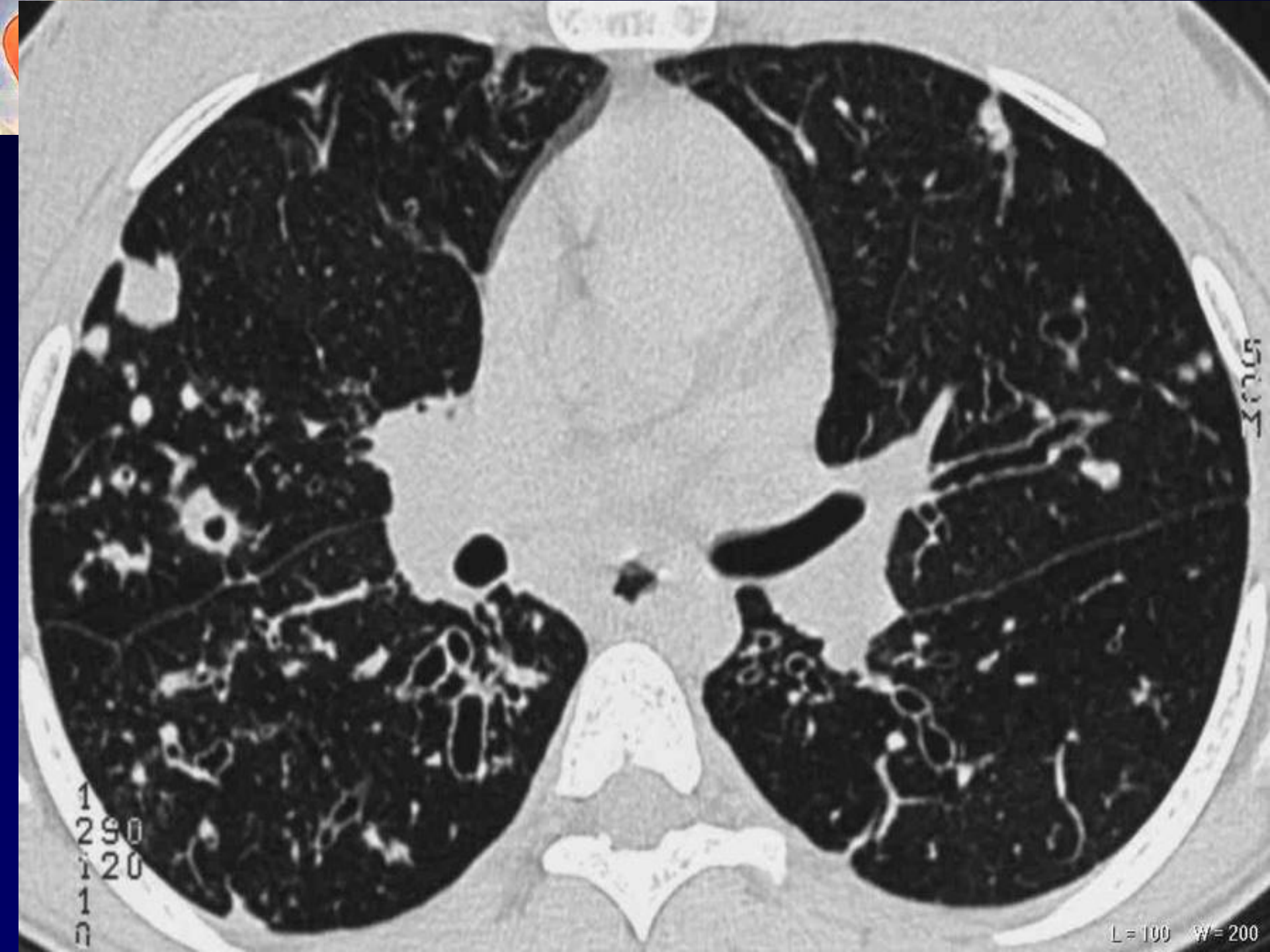
L = 100 W = 200



1
290
120
1
0

LUNG

L = 100 W = 200



50037

50037

1
290
120
1
0

L = 100 W = 200





Diagnostic ?



Mucoviscidose avec DDB et surinfection par Mycobacterium Avium